



GENERAL

- L.O.A 56.6 m
- DEPTH 2.8m
- BEAM MLD . 10.8 m
- DRAFT DESIGNED 1.8 m
- VESSEL TYPE COMMERCIAL: LCT
- HULL MATERIAL STEEL
- CLASSIFICATION ABS

TANK CAPACITIES

- FUEL OIL(DOMESTIC) 95.00 m3
- FRESH WATER 65.00 m3
- Ballast tanks/drill water 226.50m3
- Lubricate oil tanks 5.00 m3
- Dirty oil tank 8.20 m3

PERFORMANCES

- CRUISING SPEED 10 Knots
- ENDURANCE About 30 days
- RANGE About 6700 nautical miles

PROPULSION SYSTEM

- MAIN ENGINES 2 x YANMAR 6AYM-WET
Marine Diesel Engine
- POWER 2 x 650 BHP@1900 rpm
- GENSET 2 x 105 Kva, DIESEL DRIVEN
GENERATOR,415/3/50,
3-WIRE ARE PROVIDED;
ENGINES TO BE 24D.C. STARTED
AND HEAT EXCHANGER COOLED
- GEARBOX Rentjes WAF364L RATIO 4.92 : 1

PUMPS

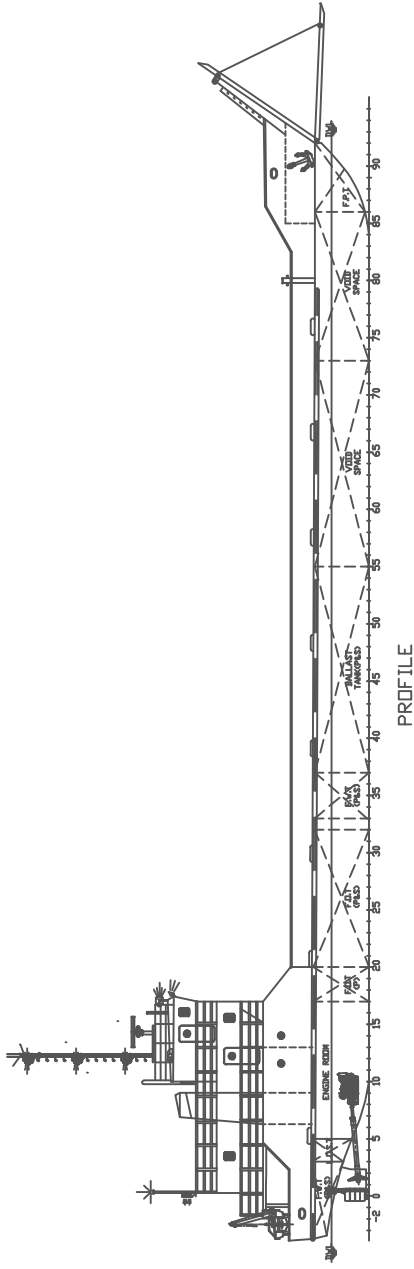
- Bilge, Fire & GS Pump 2 x 45m³/h @45m total head
- Ballast Pump 1 x 100m³/h @ 25m total head
- Fuel Transfer Pump 1 x 10m³/h @30m head
- Emergency Fire 1 x 25m³/h @45m
- Cargo Fuel Oil 1 x 150m³/h @ 60m head
- Cargo Fresh Water 1 x 80m³/h @ 60m head

ACCOMMODATION

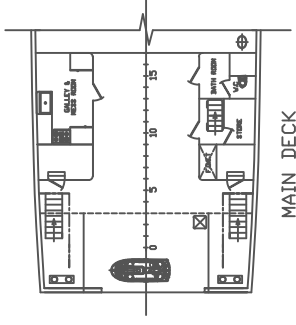
- 2 x 1-berth cabins 2 men
- 4 x 2-berth cabins 8 men
- Total 10 men

DECK MACHINERY & SAFETY EQUIPMENT

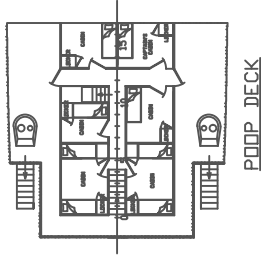
- Bow Anchors (2) SPEK type Anchor w/ equivalent stockless bower mass of 1740kg.
- Bow Anchor Chains total 247.5 m length (shackles @ 27.5 m) of 36mm dia., grade 2 steel chain cables stud link chains
- Mooring lines 4 x 160M long mooring rope of minimum 132.4 kn breaking strength (nylon ropes)



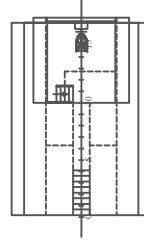
PROFILE



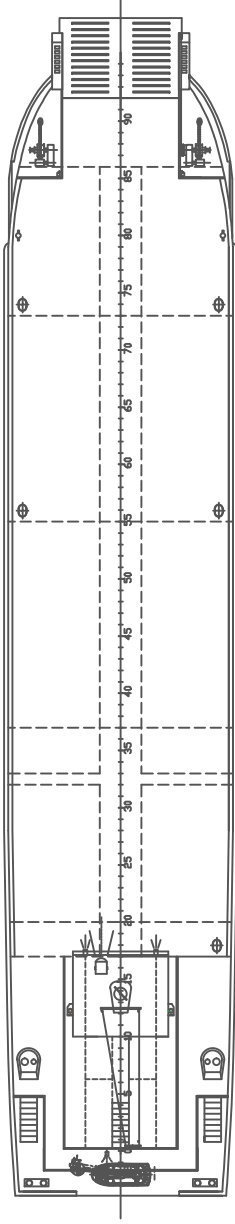
MAIN DECK



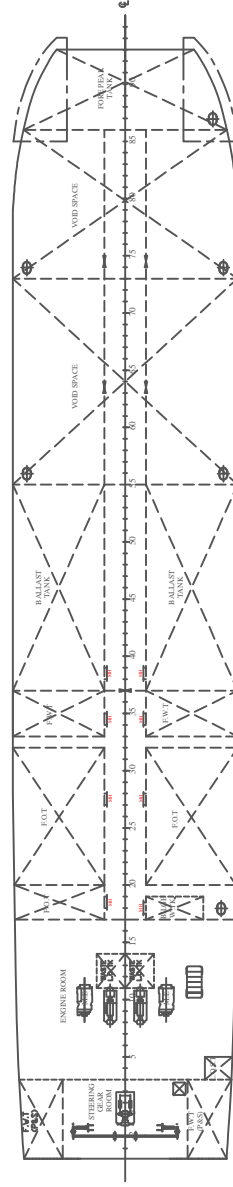
POOP DECK



WHEEL HOUSE



MAIN DECK PLAN



BELOW MAIN DECK PLAN

PRINCIPAL DIMENSIONS
 LENGTH O.A (HULL) 56.6 m
 BEAM MLD 10.8 m
 DEPTH MLD 2.8 m
 DESIGN DRAFT 1.8 m



Jacobs Schiffbau GmbH
 2122 W. Hoedijk
 The Netherlands
 Tel. +31(0)235347010

PROJECT: AM5201-004
 DRAWING: AM5201-004-001
 SHEET: 1/10
 DATE: 2014